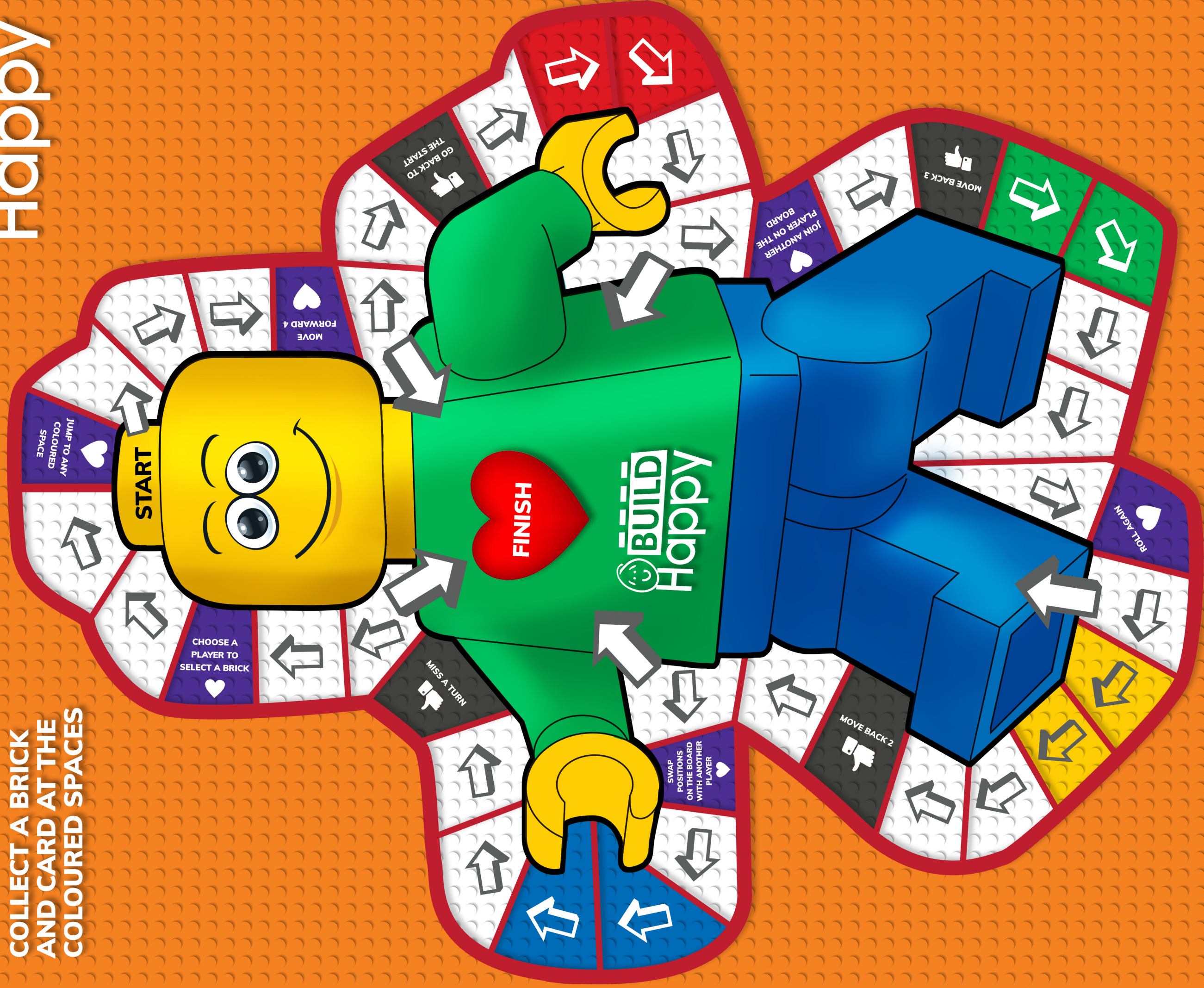


ROLL AN EVEN
NUMBER TO START

COLLECT A BRICK
AND CARD AT THE
COLOURED SPACES



BUILD-A-BUDDY GAME

BUILD-A-BUDDY GAME



The Aim of the Game

To be the first player to construct a complete LEGO® Buddy, by visiting the 4 coloured zones on the board, then race to reach the heart.

How to Play

- All player tokens are located in the head before play commences.
- The youngest player starts then play continues clockwise.
- Roll an even number to begin.
- If you land on a special space, follow the instruction.
- When landing on a coloured zone, players select the top card from the corresponding coloured Buddy-Game-Card pile. Briefly explain the friendship characteristic if necessary. Players then select that same coloured brick to add to their player token.
- Players must land exactly on one of the coloured zones in order to collect the card and brick, or must keep going around the board as per their die roll.
- When a player lands on a double-arrowed space, they may choose to take a short-cut through the torso. The torso counts as 1 counting space, and the player must exit only on another of the double-arrowed spaces marked.
- When all 4 coloured bricks have been collected, race to the heart to finish the game. A player may "stick" instead of moving when they have a complete build and are trying to reach the heart to finish.



Download your
BUILD-A-BUDDY GAME CARDS
from our website
www.build-happy.co.uk